

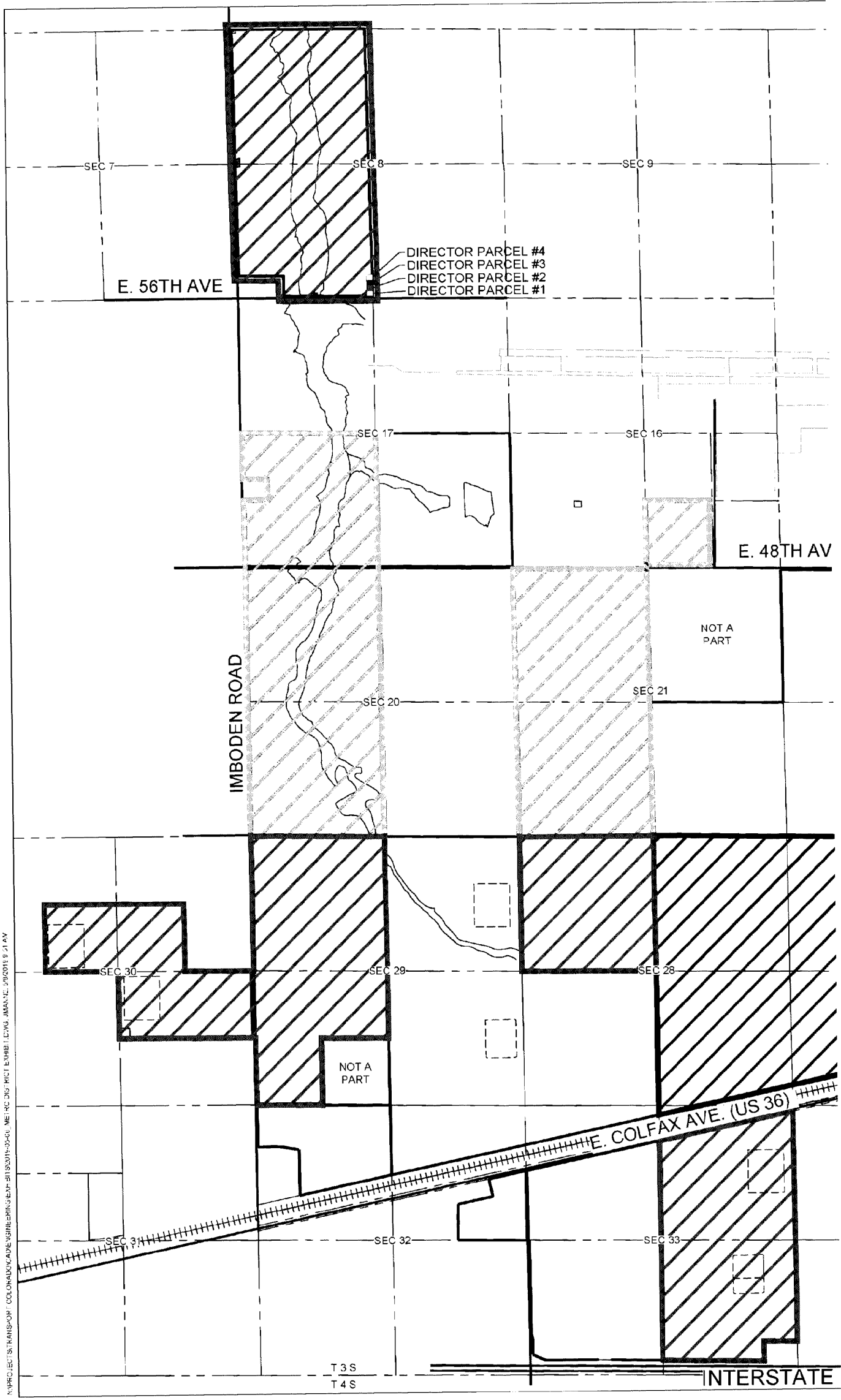
WHEN RECORDED RETURN TO:
WHITE BEAR ANKELE TANAKA & WALDRON
2154 East Commons Avenue, Suite 2000
Centennial, CO 80122

Transport Metropolitan District No. 1
(In the City of Aurora, Adams County, Colorado)

SPECIAL DISTRICT PUBLIC DISCLOSURE
Pursuant to § 32-1-104.8 C.R.S.

Name of District:	Transport Metropolitan District No. 1 ("District")
Powers of the District:	All powers authorized in § 32-1-1004, C.R.S., including, but not limited to, fire protection, mosquito control, parks or recreational facilities or programs, traffic and safety controls, sanitation services, street improvements, television relay and translator facilities, transportation, water services, and solid waste disposal, subject to the limitations contained in the District's Service Plan.
Service Plan:	The District's Service Plan, which can be amended from time to time, includes a description of the District's powers and authority. A copy of the District's Service Plan is available from the Division of Local Government.
	Transport Metropolitan District No. 1 is authorized by Title 32 of the Colorado Revised Statutes to use a number of methods to raise revenues for capital needs and general operations costs. These methods, subject to the limitations imposed by section 20 of Article X of the Colorado Constitution, include issuing debt, levying taxes, and imposing fees and charges. Information concerning directors, management, meetings, elections and current taxes are provided annually in the Notice to Electors described § 32-1-809(1), C.R.S., which can be found at the District office, on the District's web site, on file at the Division of Local Government in the State Department of Local Affairs, or on file at the office of the clerk and recorder of each county in which the special district is located.
District Boundaries:	A map of the District's boundaries is attached hereto as Exhibit A. Please note that the District's boundaries may change from time to time. Please contact the District for the latest information.

EXHIBIT A
District Boundary Map



E. 56TH AVE

DIRECTOR PARCEL #4
DIRECTOR PARCEL #3
DIRECTOR PARCEL #2
DIRECTOR PARCEL #1

E. 48TH AV

NOT A PART

NOT A PART

E. COLFAX AVE. (US 36)

INTERSTATE

IMBODEN ROAD

SEC 7

SEC 8

SEC 9

SEC 17

SEC 16

SEC 20

SEC 21

SEC 30

SEC 29

SEC 28

SEC 31

SEC 32

SEC 33

T 3 S
T 4 S

N:\PROJECTS\TRANSPOF - COLORADO\ADAMS\GIBBERN\SUBMIT\2019\05\01\WE-RC-DISTRICT EXHIBIT LEWS - JANUARY 2019 9 11 AY